

DEMOLITION GRABS

DG

GRABS FOR DEMOLITION, SORTING AND HANDLING MATERIAL

COMPATIBLE WITH



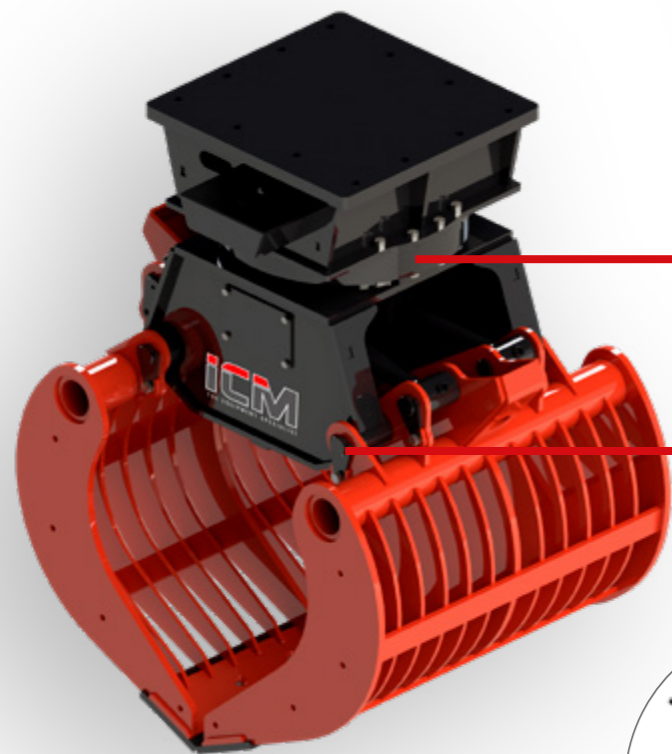
EXCAVATORS



REINFORCED STRUCTURE FOR DEMOLITION WORK

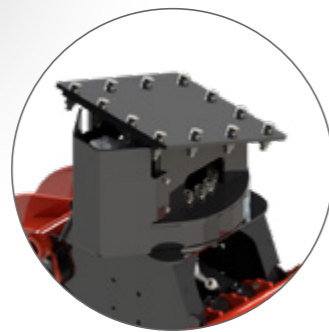


REVERSIBLE BOLTED UNDER-BLADE PRODUCED IN HARDOX 450



HYDRAULIC SLEW RING ROTATION: COMPACT AND PERFORMING

EACH PIN IS EQUIPPED WITH A WIPER SEALS FOR PROTECTION AGAINST DUST



For models DG 29 / DG 45 / DG 66 and DG 85 the bracket is inclined.

For models DG 151 / DG 191 / DG 231 / DG 270 and DG 300 the bracket is flat.

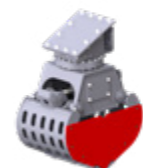
EXCAVATORS	TON	0-2	2-3,5	3,5-5	5-6,5	6,5-9	9-14	14-18	18-23	23-27	27-30
MODEL		DG 22	DG 29	DG 45	DG 66	DG 85	DG 151	DG 191	DG 231	DG 270	DG 300
CLAMPING FORCE	daN	1340	1340	1360	2170	1990	3280	4540	5160	5900	5500
WEIGHT	kg	144	172	201	296	339	594	694	1169	1650	1930
MAX PRESSURE	bar	250	250	250	250	250	300	300	300	300	300
A	mm	840	840	1010	1150	1330	1520	1700	2010	2200	2400
B	mm	600	600	640	800	860	1020	1100	1220	1300	1380
L	mm	370	370	450	500	600	700	800	1000	1200	1200
H1	mm	800	840	970	1100	1190	1300	1400	1560	1620	1730
H2	mm	750	790	860	1010	1050	1150	1200	1310	1400	1490
TORQUE	Nm	1300	2470	2470	2470	2470	3364	3364	9196	9196	9196
MAX PRESSURE	bar	250	120	120	120	120	200	200	200	200	200
MAX FLOW RATE	lt/min	10	10	10	10	10	12	12	15	15	15
NUMBER OF MOTORS	Nr	1*	1	1	1	1	1	1	2	2	2

* For MODEL DG 22, rotation is provided by a GR55FF hydraulic rotator.

MODEL AVAILABLE WITHOUT ROTATION

WEIGHT	kg	93	93	125	195	238	434	534	839	1240	1520
H3	mm	560	560	620	745	838	945	1062	1222	1310	1440
H4	mm	506	506	503	658	700	818	683	970	1100	1210

OPTIONAL



SIDE WALLS



SIDE WALLS W / SERRATIONS



12-VOLT SOLENOID VALVE (required if the excavator has a single hydraulic line)

